



# CHAPEL BY THE SEA BONDI BEACH



## Annual Report 2013



# Contents

We meet on land that has been cared for from time immemorial by the Eora/Daruk people. We are an inclusive community seeking to live out the standards and values of Jesus – those of respect, faithfulness, love, grace, mercy, duty, justice, forgiveness, compassion and generosity – all born out of the genuine spirituality that results from a depth of relationship with God. Our aim is to develop the Chapel by the Sea as a community hub for the exploration of spirituality, justice, community building, open searching, creativity, human and eco-solidarity. To that end we have developed a whole range of programmes and made the Chapel available to other groups with these goals. These include our Song Circle, Cosmic Wheel; Global Village Bondi, Meeting Point and our new expanded Health and Wholeness programme incorporating both Magnolia Healing Centre and Wellbeing by the Sea.

---

**3**

**Chairpersons Report**

**5**

**Financial Report**

**6**

**Ministers Report**

**7**

**Our Team**

**8**

**Mission & Values**

**10**

**Norman Andrews  
House**

**12**

**Iluka Childcare**

**15**

**North Bondi  
Kindergarten**

**16**

**Aboriginal Collaboration**

**17**

**Our Mural**

**18**

**Magnolia Healing  
Centre**

**19**

**Op Shop**

**20**

**Surfari &  
Christmas Lunch**

**21**

**Prominent Visitors**

**22**

**Art Exhibition**

**23**

**Cafe Church**

**24**

**Cafe Church  
& Ruby's Highlights**



# Chairperson's Report

## COMMUNITY ADVISORY BOARD 2013 CHAIRPERSON'S REPORT

2012/13 has been a year of restructure and change for the Chapel and any change, no matter how positive or exciting, can be unsettling for those who have been with us for some time.

The Chapel by the Sea is a Mission of the Uniting Church of Australia in Bondi Beach and has been operating since 1975 at its current address. Being a Mission means that it not only provides Christian spiritual services and pastoral support to the Bondi community, it also delivers community programs – “love in action”.

Like any Uniting Church, the Chapel congregation elects a Church Council through its (at least, annual) congregational meeting, as the body ultimately responsible for the life and witness of the Church. The Chapel funds its community programs through its commercial activities and without these, they wouldn't exist, so it's critically important that the commercial side of the Chapel functions well, otherwise, it puts at risk all the wonderful work the Chapel does in the local community.

The Uniting Church of Australia Property Trust owns the Church properties but provides the beneficial custodianship to the Chapel to enable it to receive rental income, including from a portfolio of retail properties in Bondi Beach. The Chapel also operates an opportunity shop in North Bondi and two kindergartens under license from Uniting Care Children's Services, as well as Norman Andrews House, a community and drop in centre with Public Benevolent Institution (PBI) status which provides direct relief from poverty and disadvantage to those who are homeless. Norman Andrews House and the two kindergartens are managed by Management Committees governed by individual Constitutions.

The governance and compliance requirements of kindergartens and a PBI status organisation are onerous enough and have become more so over the last ten years – even more so when the organisation operating them is a Church because there is often conflict between the legal and secular imperatives and the spiritual and pastoral. Added to this was the huge workload of operating a Mission of this size placed on the two people tasked with the day to day running of the Chapel, the Minister, Rev John Queripel and the administrator, Jackie Clack.

To address these issues, the Chapel commissioned Rev Marian Gledhill in late 2010 to undertake a consultancy to examine the structure of the organisation and its internal processes and procedures. Rev Gledhill made a series of recommendations in her report, mostly revolving around governance and in particular, the functional separation between the pastoral and spiritual aspects of the Chapel's activities from the secular and business aspects.

To create the governance mechanisms and infrastructure to implement her recommendations, Rev Gledhill proposed the creation of an advisory committee to Church Council which was delegated the governance of the secular and commercial aspects of the Chapel's operations, leaving the spiritual and pastoral aspects to the Church Council. This advisory committee was to be made up of people experienced in governance, legal and commercial operations.

In April 2012, the Community Advisory Board was created by two resolutions by Church Council<sup>1</sup>

**“It is resolved that** the Community Advisory Board be responsible, as a committee of Church Council, for all matters to do with governance of the polity, property, promotion and marketing, finances, and the administration of present and future ministries. The Community Advisory Board



will have specific power to act and will determine its own rules and procedures.”

This delegation fulfilled the main recommendation by Rev Marion Gledhill which was to free the Church Council to be better able to carry out its spiritual, sacramental and pastoral responsibilities, as given in the Regulations (Reg 3.1.13(a)<sup>2</sup>). Those other responsibilities, to do with governance of the polity, property, promotion and marketing, finances and administration of ministries for which Church Council is still ultimately responsible (Reg 3.1.13(b)(vii) and (viii)<sup>3</sup>) were delegated to the Community Advisory Board which is responsible to the Church Council (Reg 3.1.23<sup>4</sup>).

**“It is resolved that** the Community Advisory Board be granted specific power to act and to determine its own rules and regulations as permitted under the Regulations (Regs 3.1.25<sup>5</sup> and 3.1.26).”

It was expected that this model, used by other Missions in the Uniting Church, would best enable the Chapel to operate both in its spiritual ministry and community ministries, paying due regard to the necessary regulations and structures.

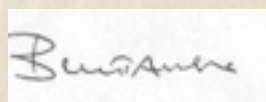
Between April 2012 and 30 June 2013, the Community Advisory Board met monthly to put in place the governance processes and procedures to facilitate this restructure. It began with developing its own Terms of Reference document, which needed to remain flexible because the scope of its activity would change as the restructure progressed. A series of sub-committees were created to undertake particular tasks including the governance sub-committee, which began a legal and financial due diligence of the Chapel’s operations as its highest priority, as well as sub-committees for business and property, PR and marketing, finance and fundraising.

One of the last phases of the restructure has recently begun (since 30 June) with a visioning process and the employment of staff in each of

the two main functions of the Chapel organisation. A Pastoral Care Worker has been employed to work with the Minister to develop and implement the Pastoral Care Plan and a Chief Executive Officer has been employed to develop and implement the strategic and business plans, along with a recently employed Events Coordinator and Communications Coordinator. The Chief Executive Officer is delegated all executive and management functions of the Advisory Board and will manage the Advisory Board sub-committees.

Of course, being a Church, the two functions of spiritual/pastoral and secular/commercial will continue to work in close concert, as will the Chief Executive Officer and the Minister. The commercial activities of the Chapel are seen to be informed and underpinned by the Mission of the Church, evidenced by the fact that the ultimate decision making body is Church Council, not a board of directors, as in the commercial world and Mission planning will continue to be facilitated with the congregation by Church Council.

The restructure and related governance processes will help make the Chapel by the Sea a vibrant, relevant and modern Christian Church, well-placed to implement its Mission and Values in the Bondi Beach and North Bondi community.



Brookes McTavish  
Chairperson 2012/13

<sup>2</sup> Since 1 October 2012, this provision is found in Reg 3.1. 2(a) of UCA Regs 2012.

<sup>3</sup> Since 1 October 2012, these provisions are found in Reg 3.1. 2 (b)(vii) and (ix) of UCA Regs 2012.

<sup>4</sup> Since 1 October 2012, this provision is found, in similar terms, in Reg 3.7.1, 2012.

<sup>5</sup> Since 1 October 2012, this provision is found in Reg 3.7.1(c) of t UCA Regs 2012.





# Financial Report

## Financial Summary

For the year ended 30<sup>th</sup> June 2013 the Bondi Beach Mission recorded a consolidated audited surplus of \$72,289. This was a substantial decrease from the surplus of \$255,498 recorded for the previous year and represents a decrease of \$183,209.

Our consolidated revenue was \$2,427,811 which was an increase of only \$54,551 while consolidated expenditure was \$2,355,522, an increase of \$237,760.

## Chapel

The Chapel recorded a surplus of \$40,821 which was a decrease from the previous year's surplus of \$132,628. The major reason for the decrease was the increase in assistance to the Bondi Beach Community Centre of \$77,174.

## Iluka Childcare Centre

Iluka recorded a surplus of \$13,084 which was a substantial decrease from \$144,433 the previous

year. The major reason was the increase in staff related expenses (including workers Comp) of \$132,031. While revenue increased by \$24,133, expenditure increased by \$155,482.


## North Bondi Kindergarten

North Bondi Kindergarten recorded a surplus of \$11,447 which was virtually unchanged from \$11,065 the previous year. Revenue increased by \$27,309 and expenses by \$26,927.

## Bondi Beach Community Centre

The BBCC recorded a surplus of \$6,937 from a deficit of \$32,628 the previous year. The reason for the turnaround was the increase in assistance from the Chapel of \$77,174, without which the deficit would have been \$70,237.

## John Ferguson



**SAVE THE EARTH**  
1.01 is an inspired  
and intelligent  
engagement of  
inquiring and  
poetic religious  
ideas in  
response to  
environment  
issues.

Sunday September 30<sup>th</sup>. 7PM.



# Minister's Report

The Chapel by the Sea was established in 1970 with the construction of the building at 95 Roscoe Street. This followed the sale and subsequent demolition of the old church in Wellington St. From those proceeds it was possible to build both the Chapel building and also a kindergarten at 75 Roscoe St, currently the Iluka Long Day Care Centre.

The Chapel building is a purpose built building consisting of the chapel and offices, along with a café area, Ruby's Place. It also has shops underneath which are commercially rented, along with two flats in order to partially pay for the Chapel's extensive ministries.

The Chapel later began welfare work within the Chapel premises and then moved it to Norman Andrews House, 77 Roscoe Street. The Chapel then extended its childcare programme by establishing the North Bondi Kindergarten. With the closure of the Wesley North Bondi Church an Op Shop was established in those premises.

Currently at Norman Andrews House we provide a drop in service Monday – Friday with breakfast and lunch served. We also offer advocacy services including legal and tenancy advice, along with storage and shower facilities. The gap in our welfare work over the weekend has recently been filled by a Sunday meal provided

ecumenically by Emanuel Synagogue.

Iluka provides Long Day care for 58 children while North Bondi offers care for 24.

The Op Shop is generously staffed by volunteers with proceeds being primarily used for our Norman Andrews ministry.



In recent years the Chapel has moved into the arts/cultural domain hosting numerous concerts, performance and art exhibitions. Further the Chapel has become a centre for discussion and forums. These take place through such regular meetings as Café Church, Meeting Point, the Global Village/Local Action group and Transition's Bondi.

Another important ministry, with which the Chapel has become involved in recent years, is that of 'Healing and Wholeness.' The components of this are a whole range of programmes and therapies designed to help people grow. These programmes take place both at the Chapel and also at Magnolia Rose Bay. These

programmes involve mediation art therapy, dance, yoga, acupuncture, massage, but also includes such things as singing and language learning (Spanish). We acknowledge the kind provision of the Magnolia premises by our neighbouring Rose Bay – Vaucluse Congregation.

Very recently the Chapel, by allowing the use of our café space, has become involved with the provision of organic foods both through 'Food Connect' and 'the Bondi Food Co-operative.'

The governance of the Chapel is under the Church Council. That body in April 2012 delegated tasks to do with governance, property, businesses and promotion and marketing to a Community Advisory Board.

The Chapel continues to look for further deepening and expansion of its work over the coming years.

**Rev John Queripel**

**(Chapel Minister)**





# Our Team



**John Queripel**



**Brookes McTavish**



**Jackie Clack**



**Victoria Philips**



**Zoe Campbell**

## **Rev John Queripel, Ministry Team**

John has a wide range of ministry experience having ministered in central Wollongong, established a Community Based ministry in Newcastle and has rural experience in Wauchope. He has also done chaplaincy work within the University of NSW and Lithgow Correctional Centre.

He has a deep interest in worship, be it celebrative or meditative, with a passionate belief that it must touch the deep place that we have hunger to be filled.

John has a strong interest in justice issues. He is concerned to communicate a faith which is authentic both experientially and intellectually. His other interests are reading, writing (theology, comparative religion, poetry and song). You may even find him out surfing on his Malibu.

He chairs the Uniting Church (Synod of NSW and the ACT) Relations with Other Faiths Committee, is President of the N.S.W. Council of Christians and Jews and is also a member of the Faith and Unity Committee of the Uniting Church (Synod of NSW and the ACT).

John is a singer-songwriter, playwright and author. His books are available at the Chapel or online through the Chapel's website.

## **Brookes McTavish, General Manager**

Brookes McTavish graduated from The New Seminary and was ordained an Interfaith Minister As well as chairing the Chapel By The Sea Community Advisory Board and sitting on Church Council, Brookes is a member of the UCA NSW ACT Synod Relations With Other Faiths Committee.

## **Jackie Clack, Admin Assistant**

Jackie is our administrator and 'Jackie of all trades'. She is the friendly face you'll most likely first encounter on phoning or entering the Chapel.

## **Victoria Philips, Events Coordinator**

Victoria is our events manager. Get in touch with her if you would like to put on an event at the Chapel. She is also a great chef, educator and community organiser and has a strong interest in community empowerment.

## **Zoe Campbell, IT & Communications**

Zoe's enjoys InformationTechnology with vast experience in Education, Recruitment, film, design, digital media and business applications. Zoe's other passion is with Yoga Ayurveda for counseling, emotional, spiritual and physical health.



# Mission and Values

In a time when religion has become for so many associated with fundamentalism, fear and narrow mindedness, the Chapel by the Sea and its ministries seek to promote Jesus as a liberating life-giver. Faith, we believe, must be authentic with an integrity in both its intellectual and experiential components.

At the heart of Jesus' ministry is his commitment to what he called the 'Kingdom of God', the vision of a society where right relations would be present between peoples. To that end we work toward justice, peace, harmony and reconciliation with a particular concern for the poor and marginalized both in our community and the world and also for ecological wholeness and sustainability for our mother Earth.

In our commitment to the human family as a whole and the common search for meaning and purpose we express a strong concern for Inter-faith dialogue and understanding. This takes place with regularly hosting visitors from other faith traditions as well as our Inter-faith celebrations.

We believe life is to be celebrated as something beautiful and creative. The arts are signs of that creative endeavour, hence their part in our ministry. The Chapel therefore regularly hosts concerts and

art exhibitions both in the Chapel itself and at Magnolia.

Likewise our concern for healing and wholeness in the image of Jesus whose ministry was so centered around healing. This takes place at the Chapel and Magnolia with a whole range of healing modalities being available.

The Chapel by the Sea has had a long commitment to working with the poor and marginalised. We do that primarily through our Norman Andrews House programme. That ministry centres on welfare but also empowerment of those who are touched by it. We are looking to develop this ministry in new and exciting ways.

We believe in being fully involved with contemporary issues and questions in the world of thought, believing that faith and life raise more questions than supplying simplistic answers. To that end, we have a range of speakers and presentations at the Chapel including our annual Future Dimensions Conference. The Chapel has a long history of acting in the socio-political sphere to raise and advocate issues essential for community well-being.

Community building is a passion of ours at the Chapel and we seek to develop communities which are open, diverse and caring ready to explore the radical nature of faith and committed to those things which affirm both human life and the love of creation. We strongly affirm a holistic spirituality and understanding of faith.

Our worship lies at the heart of all we do. In its participative celebration and use of contemporary forms we seek to communicate in a style which is open to those who may be alienated from traditional religious forms. With a challenging message, a deep beauty in our worship forms and great music we aim to make worship a positive, growing experience for those who take part.

We invite you to come and join us.

***Rev John Queripel***





# WORSHIP CELEBRATIONS



## SUNDAYS

9AM & 11AM  
CONTEMPORARY CELEBRATION

3PM:  
HEALING & WHOLENESS

7PM:  
CAFE CHURCH  
GUEST SPEAKERS/PERFORMANCE

## ALL ARE WELCOME!

FIRST SUNDAY OF THE MONTH:  
HOLY COMMUNION

BY APPOINTMENT:  
MARRIAGES, BAPTISMS  
&  
FUNERALS

CHAPEL MINISTER: REV JOHN QUERPEL  
OFFICE HOURS: MONDAY TO FRIDAY 9AM TO 5PM TEL: 9130 3445  
[WWW.CHAPELBYTHESEA.UNITINGCHURCH.ORG.AU](http://WWW.CHAPELBYTHESEA.UNITINGCHURCH.ORG.AU)  
LIFT FOR DISABLED ACCESS

THE CHAPEL IS OPEN MONDAY TO FRIDAY FOR A QUIET PLACE TO MEDITATE



# Norman Andrews House

## **The Committee membership**

Richard Taylor (Chairperson), Ann Wansbrough (Secretary), Mary Henning (Treasurer), Jane Queripel (Church Council member), Jackie Clack and Edie Castellias (congregation members), and Chris Bath (Waverley Council). The committee has met every two months this year and follows a standard agenda that sets out the areas of management that need to be covered.

## **Operations**

### **Norman Andrews House**

Norman Andrews House continues to supply Mon-Fri breakfasts, lunches, showers, counselling, lockers, and activities to people who are homeless or in need of social contact with others. Regular programs that continue to draw attendance are art, cooking and music groups. Our staff actively encourage participation in activities and this year has seen some integration of programs in the instance of our annual art exhibition where the music group performed as entertainment for the guests at the exhibition opening. Outreach services still operating at NAH include St Vincent's Hospital Nursing and Drug and Alcohol counselling. The Homeless Person's Legal Team and St Vincent's Hospital Podiatry services now operate by appoint only.

This year, as a result of some of our long-term homeless clients sustaining their social housing, we have seen a significant reduction in the number of community related anti-social behaviour both within Roscoe St and at the Bondi Pavilion. Staff continue to monitor numbers of rough-sleepers and actively seek to assist them with immediate needs but also build rapport with a view to addressing more long term goals.

In July, Chapel by the Sea hosted the Norman Andrews House Artshow, which displayed the work of service users and also featured the musical style of the Norman Andrews Band. A young documentary film-maker Hayley Olsen was also present to capture images of the art-work and conduct short interviews with some of the artists and staff. Miss Olsen's father's company had also provided Norman Andrews House and a number of

other services with a supply of blankets for dispersing among the homeless population. The completed documentary featured a number of homeless services and was screened at parliament house in October 2013.

The annual Christmas party was again held at Chapel by the Sea and attended by approximately 120 people. Norman Andrews continues to receive catering support for this activity from Icebergs restaurant and Oz Harvest. The Homeless Person's Legal Team and volunteers from Oz Harvest also provided much needed support to Norman Andrew's staff on the day serving food and dispersing presents. Waverley council Mayor Sally Betts was also in attendance speaking to the guests, and congratulating staff and volunteers on a job well done for 2012.

## **Transition to Employment Program**

The Transitional Employment program has not met expectation for this calendar year. A number of applicants were assessed throughout the year with most failing to meet the criteria and the only existing tenant failed to comply with policy resulting in eviction from the program. Management have agreed the model is no longer viable as it currently exists and will look to develop a new model which targets homeless and disadvantaged adults.

## **Policy**

The updated policy manual was completed and distributed to relevant stakeholders.

As agreed by management the house now has an early closure on Thursdays (2pm) in order for staff to conduct regular meetings, debrief and attend to case notes and general admin.

In accordance with new policy requirements, staff document all critical incidents and regularly update client files to reflect their most recent inter-actions with staff.



## Funding

The Chapel by the Sea Mission continues to provide most of our funding. Waverley Council provides the equivalent of funding one part time worker

The meals program largely depends on "in kind" contributions on a regular basis from several community groups such as Oz Harvest, Sonoma Bakery, IGA and volunteer cooks.

Paddington RSL funded \$5,000 for a replacement Washer/Dryer machine which runs on tokens and has proven considerably cost effective as the operational and material costs have decreased substantially.

The contribution of the local donor has decreased this year, \$20,000 in total.

Due to changes in the managerial structure of Norman Andrews the annual fund-raiser was postponed this year and will be re-scheduled for 2013.

Both the Clovelly Community Bank and Guardian Funerals continue to support the Norman Andrews art program providing funds for art supplies.

## Human Resources

The house continues to employ a full-time coordinator, two part-time employees who job share a five day per week position and a part-time cook/cleaner. Arthur, the live-in volunteer continues in his position as does Marion Nicholas who volunteers her services twice weekly to prepare the lunch meal. The opportunity shop operates Thursday, Friday and Saturdays and is coordinated by volunteer Elaine Thompson who oversees a team of six volunteers assisting her with the shop. Two Norman Andrews service users also volunteer assistance with lifting and rubbish removal at the shop.

As of January 2013 management have approved the coordinator a reduction in hours from full-time 76 hours to a 68.4 hour fortnight

## Occupational Health and Safety

Annual inspection of the premises and fire hazard equipment was completed by Andrew's fire protection services in December 2012. Items replaced included three expired fire extinguishers and a replacement exit light.

In accordance with policy, all critical incidents have been documented and filed for reference.

As a result of service users gaining access to Norman Andrews outside of opening hours, management have agreed to upgrade security at the house.

## Art Program

### Norman Andrews House Art Studio Program Report



Art Studio continues to run every Thursday between 9.30 and 11.30am in the upstairs recreation room. Chrissy needs to look for avenues to find further funding/sponsorship for this program. Potentially

Guardian Funerals and a continued relationship with Eckersley's will be viable. As we are looking to the Clovelly Community Bank/Bendigo Bank Community Grants to fund buying a new stove top/oven for the soup kitchen, we will need to seek another grant from elsewhere to supplement the Art Studio funding pool.

There are plans for another annual Norman Andrews Art Studio Exhibition – most likely at Chapel by the Sea/Ruby's Place again. Chrissy will work with the participants to create a theme for the group to work on pieces for it. It is also hoped that the group might be able to create a collective group artwork for the exhibition. This will encourage team building, whilst fostering a cooperative artistic environment.

One of our service users is currently working on pieces for a solo exhibition being held in May at St Vincent's Hospital. He was approached late last year by the St Vincent's outreach team to create works and they have also provided him with some budget for art supplies etc. He has been busy painting almost every day and it has given him a focus and drive to continue to express himself as both an artist and an indigenous man.





# Iluka Childcare

## DIRECTOR'S REPORT 2012 QUALITY IMPROVEMENT

2012 was a year of major change for the Early Childhood sector. The Education and Care Services National Regulations 2011, replacing previous state regulations, and the Children (Education and Care Services National Law Application) Act 2010 came in to effect on January 1<sup>st</sup>. The implementation of the National Quality Standard (NQS) and new national rating system also commenced at the same time. These are both initiatives of the National Quality Framework.

The National Quality Standard sets a new national benchmark for the quality of education and care services. ACECQA advised that, as the benchmarks have now been lifted to match what research tells us is the very best care for children, it is expected that many services such as ours who were rated as High Quality under the previous Quality Assurance system may initially achieve a rating of "Working Towards" or "Meeting" the Standard. The NQS contains 7 Quality Areas, which include 18 Standards and 58 Elements, against which the service must assess its performance, identify its' strengths and develop a Quality Improvement Plan (QIP). Our first QIP was submitted on 30<sup>th</sup> April.

We received a draft report in February. A response to the draft was submitted to clarify some discrepancies contained in the report. The draft indicated that the service will be given a rating of "Meeting" the Standard for 4 Quality Areas - Educational program and practice, Children's health and safety, Staffing Arrangements, Relationships with children; and "Working Towards" the Standard for 3 Quality Areas - Physical Environment, Collaborative partnerships with families and communities and leadership and service management. The assessor noted in her summary *"The achievements in an educational programme that responds to children's interests and scaffolds their learning and the development of responsive and trusting relationships with the children are commended"*

My sincere thanks go to each member of the educator team for the additional time they contributed to participating in the assessment process and for their commitment to continuous quality improvement of the care and education programs for the children in their care.

## ACHIEVEMENTS

As noted in the Chairperson's Report, refurbishment of the children's and staff bathrooms was the major project for 2012. This included the installation of water efficient taps and toilets, additional storage, floor to ceiling wall tiles, high grade non-slip flooring, new ceilings and lighting. Upgrade of the food preparation area in the Nursery was also undertaken at this time. This included installation of new cupboards, refrigeration, tiling, plumbing and lighting. Work was undertaken during the Christmas closure period to minimise disruption to service operations.

Planning for the upgrade of the Upstairs Playground was also identified as a priority. Scheduling of the work was delayed due to the contractor's commitments but is due to commence in April

The service participated in the Woolworths "Earn & Learn" program. Families and staff collected Stickers (points) when making purchases at Woolworth's over a 6 week period. 4750 points were collected. We have recently received our order of natural tree blocks, adjustable hurdles (6), a cozy corner canopy, sensory balls (6) and various collage materials to the value of \$450.

Credit vouchers to the value of \$373 was received from Modern Teaching Aids and Kangaroo Trading for family orders from Toy catalogues. An additional gift of 8 educational board games was also received in recognition of the volume of sales.

\$240 commission was received from sales of children's Annual Photos.



## FAMILIES & COMMUNITY

On the recommendation of UCCS we transferred to a new fee management system. **Hubworks** is now being used as the software program to manage fees, enrolments and CCMS payments. The web based program provides more regular updates from CCMS so accounts are more current and when fully operational will provide a facility for parents to log on anytime via the internet to view their child care entitlement, fees and payments and update their personal details.

Several parents took the opportunity to spend time sharing their skills, becoming involved in various aspects of the children's program throughout the year. Our Easter celebrations included traditions from around the world with Vera Sprothen joining us for German egg painting. Alex Sommerville provided us with the story of Passover and how her family celebrates the occasion. Her daughter Frankie was very excited to share some matzos and currant juice with her friends for morning tea. Alana Shatari continued to visit on several occasions to share her passion for music, singing and dance with the children. Both she and Tonja Nachman also helped us to celebrate Hanukah. The children (and staff) were fascinated with Will Jones' giant telescope and the "special sunglasses" they were given to wear to observe the Transit of Venus. Rachel and Sibou Bangoura gave a lively presentation of West African Drumming and dance. Rachel also assisted the older children to prepare a special dance performance for our Family Night in December. The children had lots of fun playing "I spy" road safety games and listening to related stories read by Heidi Leadley. They were also curious to hear all about Simone McKenzie's job as a nurse.

A Mad Hatters Tea Party was held for families to support Sydney Children's Hospital Randwick in their major annual fundraising campaign – Gold Week Telethon. The children proudly paraded the

gold hats they had created while families donated \$195 towards the campaign.

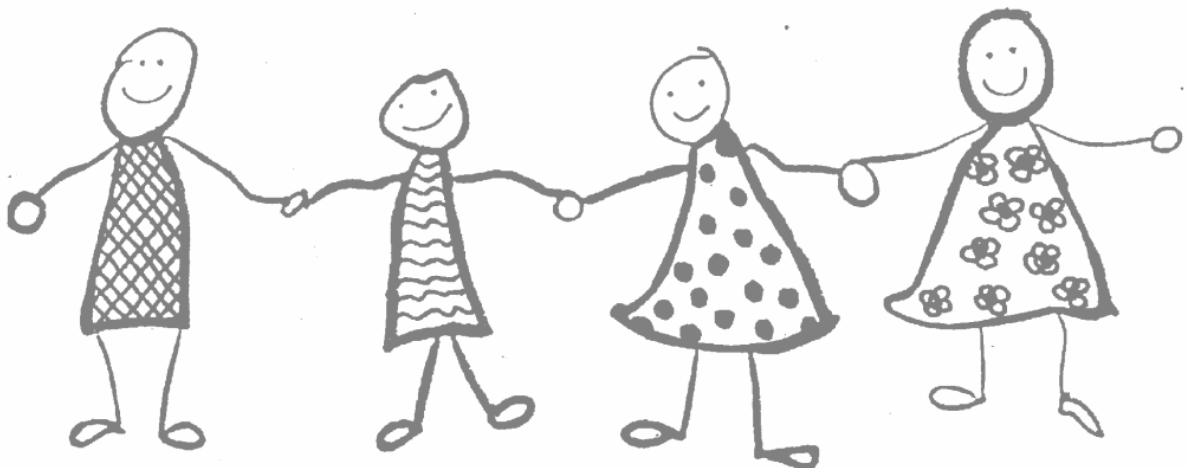
The children's artistic skills were further on show in the local community. They each decorated whale tails which were then placed into the sand at the beach to form a large communal whale tail as part of the Bondi Whale Festival. They also worked together to paint a large lantern which was included in the "Light the Night" twilight walk held at Bondi Beach to support the Leukaemia Foundation. Some also took the kites they had made at service to fly at the "Festival of the Winds".

As part of "Recycling Week" activities the older children visited local businesses requesting items they could use "to make things at Kindy". Returning with boxes large and small they were keen to ask for paints, paste and tape to begin their elaborate constructions.

An excursion to the Marine Discovery Centre was organised by Will Jones providing the children with an opportunity to both touch and observe local marine life.

Excursions into the community are not possible without the additional support of parents and I thank those who gave their time to assist us on these occasions.

"Special" visitors were also arranged throughout the year. The children learnt the 'leaf' and 'honey bee' dance and words in Darug language during an indigenous dance performance by *Jannawi*. Trina Hylton proved to be a very entertaining storyteller as she told her tales about the origins of different hats from around the world in *Top Hat and Other Tales*. The *Hatch 'n Grow* program is always popular, not only with the children but also with staff and parents. 10 fertile eggs arrived in an incubator and over the following 2 weeks we all watched excitedly as the ducklings hatched one by one and eventually they were able to join us in the playground for a swim in their "duck pond".





“Move to Calm” meditation and movement sessions and “Ditto’s Keep Safe Adventure”, a personal protective behaviour presentation for 3-5 year olds, continued to be regular features in the program.

## EDUCATORS

A one-off Teacher Costs Contribution payment of \$16,200 was received from the Department of Education and Communities to assist with recruitment and retention of Early Childhood Teachers. The payment was allocated towards salary increases and additional “release time” for the teachers to complete documentation of children’s portfolios.

Professional development focussed on the Quality Areas of the NQS and new regulatory requirements. Courses attended: Emergency Asthma Management (13); Anaphylaxis Management Training (13); Observation Writing; Educational Leaders Leading the Learning; Enriching Quality: Exploring the Standards QA5; Enriching Quality: Exploring the Standards QA6; Planning & Documentation;

Preparing for Assessment; Quality Practice: Planning a Discreet Environment; Identify and Respond to Children at Risk (3).

Appointments: Rebecca Ennis (Diploma in Children’s Services); Kewalin (Ju) Suksiri (Certificate III in Children’s Services) part-time; Anna Brack (Childcare Educator) part-time.

Resignations: Shaynie Smith (Childcare Educator), Gabriela Marighetto (Childcare Educator - Float)

## CONCLUSION

Finally I wish to acknowledge the Management Committee for their insightful contributions and guidance in supporting me in my role as Director. I look forward to working with you again in 2013 to achieve further positive outcomes for the children and families at “Iluka”.

Liz Steed





# North Bondi Kindergarten

**North Bondi Kindergarten** is a part of The Uniting Church in Australia - Bondi Beach Mission and operates with a license from the approved provider UnitingCare Children's Services. North Bondi Kindergarten has been meeting the needs of families in the Bondi area for many years.

The church was built in 1923 and later a private kindergarten operated until the Bondi Beach Mission took over the management of the kindergarten in the mid 70's. In July 1996 after consultation with parents we became a long day care centre, offering Child Care Benefit.

The centre has placements for 24 children each day aged 3-5years. There are three staff members on duty each day to educate and care for the children

The centre is open for 48 weeks of the year and is closed for four weeks over the Christmas period.

## **Our Program**

For most of the day the children play and are supervised together in a mixed group.

We find having the mixed age group successful as:

- Siblings can have more contact with each other.
- Children enjoy and learn from being with older and younger children.
- Children's self-esteem is boosted in a mixed ability group.

The children are involved in music sessions on a daily basis and this is conducted in small groups.

Throughout the day the children are encouraged to become involved in small group experiences with either a teacher or their peers. Small groups help to develop children's overall confidence and involvement in the Kindergarten routine.

At various times during the day the children are also placed into smaller age appropriate groups for story time/ language sessions.

## **Individual Records**

Staff observe and record children's development on a regular basis throughout the year. The focus of

observations are to document each child's involvement in the program and to help staff cater to each child's particular interests, needs and strengths. Our goal is to find out what the child "can do" and build from there.

Another aim of record keeping is to ensure children are developing according to their age and stage of development. Any concern raised by staff will be forwarded to the families and referral information will be provided.

Lastly staff interpret the observations and evaluate their planning and outcomes. This helps to inform and guide our program.

Parent-teacher interviews are organised at various times during the year to discuss children's progress. Any concerns or questions regarding a child's education and care are discussed with staff at any time or with an appointment.

At North Bondi Kindergarten we aim to prepare children for school by providing a caring, motivating and challenging environment. Our program is based on how young children learn.

## **We believe young children learn best when:**

- They are given opportunity and time to play
- They are actively involved in discovering, and solving problems
- They have plenty of opportunities to practice
- They are encouraged to make their own choices
- They are encouraged to achieve
- They experience success

Our learning program is play based on a strong emphasis of building children's self esteem, developing social and emotional maturity, increasing attention and concentration spans and encouraging self-help skills.

Formal academic skills such as reading, writing and mathematics are integrated into the program on a daily basis within the context of a play-based approach.



# Aboriginal Collaboration

The Chapel has been involved in an effort to create a 'Keeping Place' for Australian Aboriginal Art. As part of that process the Chapel hung the art from the Gordon and Elaine Syron collection. The most comprehensive collection of art highlighting indigenous life in Australia assembled by artists Gordon and Elaine Syron, the priceless collection documents the Aboriginal struggle over the past half century.

The collection, which has been moving from home to home, is now seeking a permanent site called The Aboriginal Keeping Place.



Rev. Ray Minnecon, Councilor Dominick Kanak, Mayor Sally Betts, Cr Joy Clayton, Adrian Newstead, owner and founder of Coo-ee, oldest Aboriginal Art Gallery, 1982.

Gordon & Elaine Syron – Café Church 16 June



Guests at the opening included the Governor of NSW, Dr Marie Bashir, the Hon. Michael Kirby, Philip Ruddock MHR, Jeff McMullen, Jack Munday and George Negus.

The following are more Aboriginal projects sponsored by the Chapel By The Sea Mission:

Solidarity  
with  
Aboriginal  
People



Lyle Davis

Fund  
raiser

Would  
you help?



Screening film  
'Kanyiri'  
about his life  
journey

Bob Randall is a  
Yankunytjatjara  
Elder and  
traditional  
owner of Uluru  
and is also one  
of the Stolen  
Generation.





# Our Mural

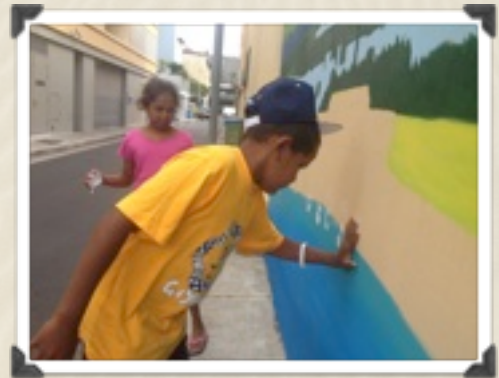


The Chapel By The Sea launched a significant Street Art Mural, celebrating Social Justice for Indigenous Australians. The mural recognised five leading figures in that struggle. That journey continues today with the campaign for the recognition of Indigenous people in the Constitution of Australia.

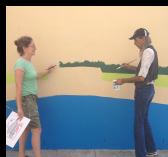
The artists Etienne Cohen and Paul Davis have been on a journey too! Their collaboration showed that with respect we can share, yarn and create together, we are reconciled to a brighter future for all Australians. Mural contributions on Closing the Gap

day were by Goodooga students. After the work was done group photos were taken with the students.

This mural is the third in a series of social justice murals supported by Uniting Churches, the others



being “I have a Dream” in King St Newtown and “The Peace Unity & Justice” murals in the Sydney city centre.



## Mural Launch

Saturday June 22pm @ 2pm

From **Little** Things **Big** things Grow

**A celebration of social  
justice for all  
Indigenous Australians**

Chapel by the Sea  
1st floor,  
95 Roscoe St,  
Bondi Beach  
Ph: 9130 3445



[events@chapelbythesea.org.au](mailto:events@chapelbythesea.org.au)



# Magnolia Healing Centre

Magnolia seeks to create a safe and spiritual space which provides support, connection and inspiration to the community. It offers a holistic approach to healing and self development by providing a range of services, activities groups and events.

Magnolia's range of programs responds to the needs of the whole person, offering opportunities for growth, understanding, socialising, exercising, healing, artistic exploration and expression, spirituality, education and skills development.

Magnolia continually seeks mutually supporting partnerships with other services, always endeavouring to enhance the connection between organisation, participants, staff and the wider community, for the benefit of all.

At Magnolia we work to reduce social and personal isolation, and enhance the spirit of community through our commitment to the values of social justice, collaboration, diversity, inclusion, equality and humility.



**Peter Miller-Robinson, Gary Krimotat, Victoria Phillips, John Queripel, Andrew Gaffney, Francis Wootton, Angela Smith and Eric Shumsky**



# OP Shop

Our Op shop also part of the Chapel By The Sea Mission supports our social welfare and justice work, by providing funding to the Norman Andrew's House to run programs and provide meals for the homeless, disadvantaged and women suffering abuse. The Op Shop generates approximately \$65,000 per annum.

The op shop would not run without our wonderful volunteers who do a great job in managing the donation of goods that are left daily at the Op Shop. The sorting is a mammoth task and volunteers meet the challenge every week. This year the volunteers primarily worked under the direction of Elaine Thompson, doing a magnificent job.

It is due for a refresh, painting and reorganisation of stock. We are in the process of creating a system whereby waste can be sorted, for example, metal, book and shoe recycling that until now has been picked up by council and becomes landfill.

Open 9am till 3pm, Thursday to Saturday. Corner of Warners Ave & Niblick Street, North Bondi

**OP SHOP** Bargains which



keep on  
giving

*Our volunteers greatly contribute to our work*



# Surfari Christmas Lunch

Join us on 'Surfari'

22 – 29 June



Call John Queripel 9130-3445 or  
0402-078865 Approx \$13 a night

## CHRISTMAS LUNCH



There is no worse time to be alone and hungry than on Christmas day when everyone else is eating a feast with their family and friends.

For four years The Chapel by the Sea, Bondi Beach Uniting Church, has held a Christmas Day lunch for the needy, isolated or just lonely at the Chapel. We provide a meal,

companionship and Christmas cheer to people who might otherwise be alone or hungry.

## SURFARI

As long as people have been surfing there have been surfaris, those opportunities when surfers take an opportunity to chase waves up or down the coast. The Chapel had their first Surfari this year with a group of mostly ageing surfers hitting the waves at Crescent Head for a few days in June (wetsuits needed). We stayed in the beautiful Wallum Cottages on 'the back road to Crescent' about 10 kilometres south of the town in the coastal bush. We will be doing it again making it a regular event so let us know if you are interested. You don't have to be able to surf although we did introduce one late starter at 59 to the art.

John Queripel

<http://www.wallum.com.au/> for images. We stayed in the Cockatoo cottage which comes up on the front page.



The food is provided from donations by companies, by Oz Harvest and the various organisations and people who have offered their support through Streethearts. The service is provided by volunteers, who chop, serve and chat with the guests. The entertainment is provided by friends of The Chapel by the Sea.

Free

Community  
Christmas  
Lunch





# Prominent Visitors

The Chapel has hosted a number of prominent visitors this year.

## John Dominic Crossan



John Dominic Crossan an internationally known Jesus scholar with many books to his name came to visit September 2012. He was Co-Chair of the Jesus Seminar from 1985 to 1996 as it met in twice-annual meetings to debate the historicity of the life of Jesus in the gospels. He was Chair of the Parables Seminar in 1972-76, Editor of *Semeia*. An Experimental Journal for Biblical Criticism in 1980-86, and Chair of the Historical Jesus Section in 1993-1998, within the Society of Biblical Literature, an international scholarly association for biblical study based in the United States.

In the last forty years he has written twenty-seven books on the historical Jesus, the apostle Paul, and earliest Christianity. Five of them have been national religious bestsellers.

## Bob Randall

Bob Randall is known as a leading figure in the Aboriginal community. At about age 7, Bob was taken away from his mother and family under government policy which forcibly removed all half-caste (half-Aboriginal) children from their families. He was one of thousands of Aboriginal children who were placed in institutions throughout Australia and came to be known as the "Stolen Generation." Separated from his family like so many, he grew up alone and he never saw his mother again. After many years he found his roots and returned to his mother's country where he lives today at Mutitjulu Community beside Uluru (Ayers Rock). He worked

as a Counsellor through the Methodist Uniting Church. Later, Bob helped establish the Adelaide Community College for Aboriginal people, served as the Director of the Australian Northern Territory Legal Aid Service and established Aboriginal and Torres Strait Islander Centres at Australian National University, University of Canberra, and University of Wollongong.

In the early 1970s, Bob earned widespread recognition for his song, "My Brown Skin Baby, They Take 'Im Away," which focused national and international attention on the issues of the Stolen Generation exposing the government's policy of stealing Aboriginal children. It led to the filming of a documentary by the same name that won the Bronze Prize at the Cannes Film Festival and subsequently, the Australian government stopped taking children away from their families. His lifelong efforts to retain Aboriginal culture and restore equal rights for all living were recognised in 1999 when he was named Indigenous Person of the Year.



In 2006, Bob co-produced and narrated the award-winning documentary, "Kanyini". "Kanyini" was voted "best documentary" at the London Australian Film Festival 2007, winner of the "Inside Film Independent Spirit Award",[ and winner of the Discovery Channel Best Documentary Award in 2006. Bob continues to write and teach throughout the world, presenting teachings based on the Anangu (central desert Aboriginal nation) "Kanyini" principles of caring for the environment and each other with unconditional love and responsibility.



# Art Exhibition Highlights

## Aboriginal artist, Paul Davis



Paul Davis is an Aboriginal artist from Moruya Southern NSW and is a deeply spiritual, insightful and intelligent man with a very well respected family. His grand mother was the first Aboriginal women to write to England to request education for Aboriginal people in Australia.

Paul's art can be seen inside the Chapel and also in several locations throughout Sydney as murals he has generously donated his time and energy to do.

Paul is worked with Etienne Cohen to create the mural on the outside of the Chapel building on the beach side wall.

## Byzantine icons worked by Olga Christine and Rose Lukjanenko



An exhibition of Byzantine icons worked by Olga Christine and Rose Lukjanenko at the Chapel. There were over 20 icons originating mostly from Greece, Serbia, Russia and including the famous and much adored icons of the Trinity, Crucifixion, Mary

Magdalene with Jesus, St George and the Dragon and many more.

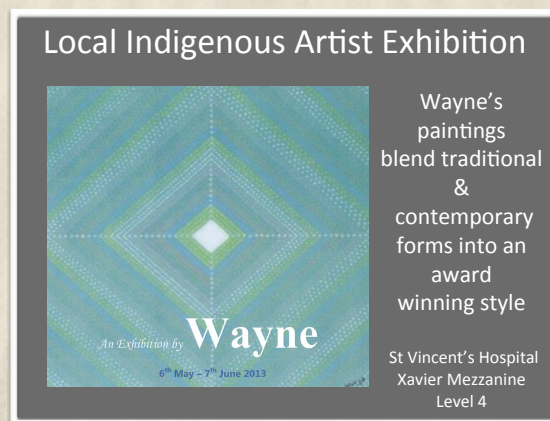
## Danielle Joy Golding



Danielle Golding's work explores conceptual frameworks of feminine beauty within classical and religious art, graphic advertising and the traditions of life drawing and painting. She intimately relates to and reworks the ideas of the beautiful that these genres of art and advertising imbue, whilst also trying to develop and bring forth a new and alternative respect for past conceptions.

## Wayne from Norman Andrews House

Wayne a community member was approached late last year by the St Vincent's outreach team to create works. They have also provided him with some budget for art supplies etc. He has been busy painting almost every day and it has given him a focus and drive to continue to express himself as both an artist and an indigenous man.





# Cafe Church

Café Church is an informal gathering for those with a broad range interest in spirituality. The program mainly consists of speakers with some films, theatre and performance as well as meditation along with Inter faith gatherings.

The year brought prominent speakers to Café Church. These included Central Australian Aboriginal leader Bobby Randall who spoke and performed to a packed house, Club of Rome member, Keith Suter, leading Australian theologians Val Webb and Michael Morwood, writer, philosopher and 'disruptive thinker' Tim Rayner, anti-slavery campaigners 'Fuzz' and Carolyn Kitto, biblical scholar Marianne Dacy.

Performance artists included film-maker Ruth Hessey, playwright Geoffrey Sykes, and internationally renowned pianist, Ambre Hammond.



**Ambre Hammond**

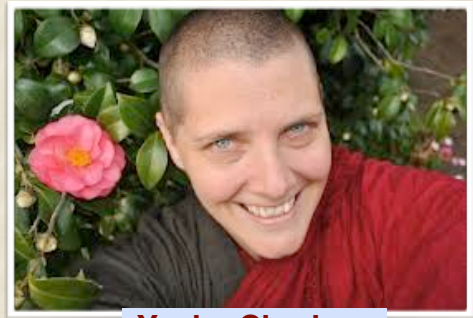
We held a number of Interfaith gatherings as well as hosting speakers from different faith traditions. These included Buddhist Nun Sr Yeshe Chodron, Rabbi Orna Triguboff and Mehmet Saral from the Auburn Gallipoli mosque.

In Café Church we also regularly share in meditative prayer in the style of the Taizé community. Taizé is a community in France which has become a fountainhead of a renewed Christian meditative spirituality [www.taize.fr](http://www.taize.fr). The style of prayer is in candlelit darkness with chants / mantras and silence.

We also enjoyed viewing a number of films with a spiritual dimension followed by discussion.

Café Church is an open community for spiritual seekers with the whole range of people, which that term implies and is always a growing, changing community.

In the last 3 months our venue Ruby's Café has undergone a makeover which has left the room bright, colourful and inviting of a day and creating a cosy eclectic community venue of an evening. The sound system has been reorganised to any musicians delight!



**Yeshe Chodron**

The room hosts, for a room hire fee, a large variety of community gatherings over the weekend with events such as Heads Hips and Heart (local community musicians and singers) to poetry, storytelling and music as well charities fund raisers.




**Ruby's Cafe**



# Cafe Church & Ruby's Cafe Highlights

## Taize Meditation

Selected Sundays @ 7pm



Taize is an ecumenical sung and silent participatory prayer service designed to achieve a contemplative state through music, song and silence

Wednesdays  
7pm

Transitioning to a sustainable society with speakers, films & scrumptious organic meal



transitionbondi.org

Dr Marianne Dacy, a Sister of Zion, is giving a talk on...  
*The Parting of the Ways between early Christianity and Judaism*

## Café Church

**SUNDAY 21<sup>ST</sup> APRIL 7PM**  
Questions & Answers

Hot Soup in a warm and friendly space



"Chapel by the Sea" 1<sup>st</sup> Floor, 95 Roscoe St, Bondi Ph: 9130-3445

## Wilde Feast fundraising dinner

Himalayan dishes using the finest ingredients



Be part of the growing number of people supporting small community events & at the same time making a difference

Sat June 30th from 7.30 pm  
Cost \$25

All proceeds will be donated to Mahkoba's Promise Inc. supporting Afghan Orphans & Widows  
[www.mahkobaspromise.org](http://www.mahkobaspromise.org)

Ruby's Café  
95 Roscoe Street  
Bondi Beach

Bookings: [Victoria7788@hotmail.com](mailto:Victoria7788@hotmail.com)  
0432874367



## LIVING THE QUESTIONS

Living the Questions DVD sessions after Sunday 10am  
Service morning tea, followed by lunch. Please bring a plate to share a communal meal. This fantastic series will continue every second Sunday.

## LIVING THE QUESTIONS

THE WISDOM OF PROGRESSIVE CHRISTIANITY

DAVID M. FELTEN and JEFF PROCTER-MURPHY

## Affordable Acupuncture Clinic Bondi Beach

Damien Bodnarchuk B.Hlth Sc TCM  
\$5 (conc) to \$29 (full wage)

Thursdays from 6pm



Bookings 0434 018 496 between 9am to 5pm  
[www.bondiacupuncture.com](http://www.bondiacupuncture.com)  
Chapel by the Sea, 1<sup>st</sup> floor, 95 Roscoe St, Bondi Beach